

DeltaMate

Water Cooling Fitting



High Performance Cooling Solutions

Under the DeltaMate product line, Thermal Grizzly offers a wide range of products for custom water cooling. Specifically in the area of fittings, the portfolio includes various products for PC enthusiasts. These water cooling fittings are CNC-machined from brass, making them particularly durable. Brass is an alloy of copper and zinc, and compared to pure copper, it is harder and more corrosion-resistant. At the same time, brass is anodically compatible with other metals. EPDM (ethylene propylene diene monomer rubber) is used for the O-rings (sealing rings) due to its high elasticity and excellent resistance to ozone and UV exposure.

The fittings can be modularly combined with one another to easily adapt to almost any tubing layout. They support soft tubes with a 10/16 mm diameter and hard tubes with a 16 mm outer diameter.

The product pages of the individual fittings offer precise dimensions in the form of a technical drawing available for download, making it easier to plan the custom loop.

The fittings are available in different colors and can be divided into the following four categories:

Water Cooling Tube Fittings:

- DeltaMate Fitting - ST16 / matte nickel
- DeltaMate Fitting - HT16 / matte nickel

Water Cooling Rotary Fittings:

- DeltaMate Rotary - 90° / matte nickel
- DeltaMate Rotary - T / matte nickel

Water Cooling Extender Fittings:

- DeltaMate Extender - MF7 / matte nickel
- DeltaMate Extender - MF10 / matte nickel
- DeltaMate Extender - MF14 / matte nickel
- DeltaMate Extender - MF28 / matte nickel

Water Cooling Accessory Fittings:

- DeltaMate Plug / matte nickel



Scope of delivery

- DeltaMate Fitting

Trademark Information

DeltaMate is a registered trademark.
Thermal Grizzly is a registered trademark.

Please note

The data in this technical data sheet are based on our current knowledge and experience. Due to the large amount of possible factors, this should not be construed as to release the users from doing their own tests and screening. No legally binding assurance of specific properties or applicability for a concrete purpose should be derived from these data.

Please consider contacting us for further detail. It is the responsibility of the recipient of our products to ensure that any proprietary rights and existing laws and legislation are observed.

Technical data

Unit:

Material:

Surface finish:

Typical use:

PU:

90x60cm

Value/description:

Brass

EPDM (O-Rings)

Stainless Steel [AISI 316] (Locking Ring)

Matte black chrome plated

Creating water cooling loops

20 Pcs.

Item number:	EAN code:	Packaging size:	*Net weight:	*Gross weight:	Capacity:
TG-DM-FIT-0001	4260711991745	12 x 8cm	24g	26g	1.2ml
TG-DM-FIT-0002	4260711991752	12 x 8cm	20g	22g	0.7ml
TG-DM-FIT-0003	4260711991769	12 x 8cm	39g	41g	2.8ml
TG-DM-FIT-0004	4260711991776	12 x 8cm	43g	45g	2.7ml
TG-DM-FIT-0005	4260711991783	12 x 8cm	14g	16g	0.5ml
TG-DM-FIT-0006	4260711991790	12 x 8cm	22g	24g	0.7ml
TG-DM-FIT-0007	4260711991806	12 x 8cm	30g	32g	0.9ml
TG-DM-FIT-0008	4260711991813	12 x 8cm	62g	64g	1.7ml
TG-DM-FIT-0009	4260711991820	12 x 8cm	14g	16g	0.3ml
TG-DM-FIT-0010	4260711991837	12 x 8cm	51g	53g	2.8ml
TG-DM-FIT-0011	4260711991844	12 x 8cm	17g	19g	1.0ml
TG-DM-FIT-0013	4260711992407	12 x 8cm	27g	29g	0.4ml
TG-DM-FIT-0014	4260711992414	12 x 8cm	25g	27g	0.7ml
TG-DM-FIT-0015	4260711992421	12 x 8cm	51g	53g	1.6ml
TG-DM-FIT-0016	4260711992438	12 x 8cm	27g	29g	0.4ml
TG-DM-FIT-0017	4260711992766	12 x 8cm	29g	31g	1.2ml
TG-DM-FIT-6001	4260711992513	90 x 60cm	6 x 24g	186g	1.2ml
TG-DM-FIT-6002	4260711992520	90 x 60cm	6 x 20g	162g	0.7ml
TG-DM-FIT-6003	4260711992537	120 x 90cm	6 x 39g	280g	2.8ml
TG-DM-FIT-6005	4260711992544	90 x 60cm	6 x 14g	126g	0.5ml
TG-DM-FIT-6006	4260711992551	90 x 60cm	6 x 22g	174g	0.7ml
TG-DM-FIT-6007	4260711992568	90 x 60cm	6 x 30g	222g	0.9ml
TG-DM-FIT-6008	4260711992575	120 x 90cm	6 x 62g	418g	1.7ml
TG-DM-FIT-6009	4260711992582	90 x 60cm	6 x 14g	126g	0.3ml
TG-DM-FIT-6014	4260711992599	90 x 60cm	6 x 25g	192g	0.7ml
TG-DM-FIT-6017	4260711992605	90 x 60cm	6 x 29g	216g	1.2ml

*Net weight is the total weight of an article excluding the weight of packaging and accessories. The gross weight refers to the total weight of the product including accessories and packaging. Slight weight deviations are possible due to production factors.

Technical data

Unit:

Material:

Surface finish:

Typical use:

PU:

Value/description:

Brass

EPDM (O-Rings)

Stainless Steel [AISI 316] (Locking Ring)

Matte nickel plated

Creating water cooling loops

20 Pcs.

Item number:	EAN code:	Packaging size:	*Net weight:	*Gross weight:	Capacity:
TG-DM-FIT-0201	4260711992285	12 x 8cm	24g	26g	1.2ml
TG-DM-FIT-0202	4260711992292	12 x 8cm	20g	22g	0.7ml
TG-DM-FIT-0203	4260711992308	12 x 8cm	39g	41g	2.8ml
TG-DM-FIT-0204	4260711992315	12 x 8cm	43g	45g	2.7ml
TG-DM-FIT-0205	4260711992322	12 x 8cm	14g	16g	0.5ml
TG-DM-FIT-0206	4260711992339	12 x 8cm	22g	24g	0.7ml
TG-DM-FIT-0207	4260711992346	12 x 8cm	30g	32g	0.9ml
TG-DM-FIT-0208	4260711992353	12 x 8cm	62g	64g	1.7ml
TG-DM-FIT-0209	4260711992360	12 x 8cm	14g	16g	0.3ml
TG-DM-FIT-0210	4260711992377	12 x 8cm	51g	53g	2.8ml
TG-DM-FIT-0211	4260711992384	12 x 8cm	17g	19g	1.0ml
TG-DM-FIT-0213	4260711992445	12 x 8cm	27g	29g	0.4ml
TG-DM-FIT-0214	4260711992452	12 x 8cm	25g	27g	0.7ml
TG-DM-FIT-0215	4260711992469	12 x 8cm	51g	53g	1.6ml
TG-DM-FIT-0216	4260711992476	12 x 8cm	27g	29g	0.4ml
TG-DM-FIT-0217	4260711992773	12 x 8cm	29g	31g	1.2ml
TG-DM-FIT-6201	4260711992506	90 x 60cm	6 x 24g	186g	1.2ml
TG-DM-FIT-6202	4260711992629	90 x 60cm	6 x 20g	162g	0.7ml
TG-DM-FIT-6203	4260711992636	120 x 90cm	6 x 39g	280g	2.8ml
TG-DM-FIT-6205	4260711992643	90 x 60cm	6 x 14g	126g	0.5ml
TG-DM-FIT-6206	4260711992650	90 x 60cm	6 x 22g	174g	0.7ml
TG-DM-FIT-6207	4260711992667	90 x 60cm	6 x 30g	222g	0.9ml
TG-DM-FIT-6208	4260711992674	120 x 90cm	6 x 62g	418g	1.7ml
TG-DM-FIT-6209	4260711992681	90 x 60cm	6 x 14g	126g	0.3ml
TG-DM-FIT-6214	4260711992698	90 x 60cm	6 x 25g	192g	0.7ml
TG-DM-FIT-6217	4260711992704	90 x 60cm	6 x 29g	216g	1.2ml

*Net weight is the total weight of an article excluding the weight of packaging and accessories. The gross weight refers to the total weight of the product including accessories and packaging. Slight weight deviations are possible due to production factors.

Short information

DeltaMate Fitting - ST16 / matte nickel

- Single tapered barb allows straightforward installation for a wide range of flexible tubes.
- Knurled compression ring securely grips the tubing with high retention force.
- Compact overall dimensions facilitate installation in almost any watercooling loop.
- Consistent outer diameter with all DeltaMate fittings for completely seamless integration.
- Robust design allows installation with an 8mm hex key.



DeltaMate Fitting - HT16 / matte nickel

- Flat base enables tubing to be installed from any direction with complete visibility.
- High surface area custom O-ring securely grips the tubing with high retention force.
- Compact overall dimensions facilitate installation in almost any watercooling loop.
- Consistent outer diameter with all DeltaMate fittings for completely seamless integration.
- Robust design allows installation with an 8mm hex key.



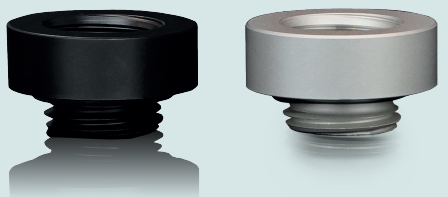
DeltaMate Rotary - 90° / matte nickel & DeltaMate Rotary - T / matte nickel

- Small dimensions allow modular combination with other DeltaMate Rotary and Extender Fittings.
- Subsequent fittings mechanically lock the rotary joint together for maximum security.
- Includes an optional aesthetic cover with DeltaMate logo that can be rotated to any orientation.
- Elegant and minimal design integrates seamlessly with all DeltaMate fittings.
- Easy to install in tight places and SFF builds using an 8mm hex key.



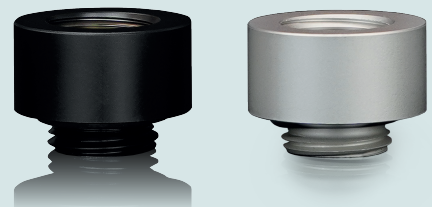
DeltaMate Extender - MF7 / matte nickel

- Can be combined with two DeltaMate Rotary - 90° to create a Double Rotary with an offset of 28mm.
- Practical fixed length extender to increase the spacing between ports and fittings by 7mm.
- Consistent outer diameter with all DeltaMate fittings for completely seamless integration.
- Robust design allows installation with an 8mm hex key.



DeltaMate Extender - MF10 / matte nickel

- Can be combined with a DeltaMate Rotary to create a direct replacement for conventional rotary fittings.
- Practical fixed length extender to increase the spacing between ports and fittings by 10.5mm.
- Consistent outer diameter with all DeltaMate fittings for completely seamless integration.
- Robust design allows installation with an 8mm hex key.



Short information

DeltaMate Extender - MF14 / matte nickel

- Practical fixed length extender to increase the spacing between ports and fittings by 14mm.
- Consistent outer diameter with all DeltaMate fittings for completely seamless integration.
- Robust design allows installation with an 8mm hex key.



DeltaMate Extender - MF28 / matte nickel

- Commonly used to add clearance for memory modules and fans or two parallel tubes in the same plane.
- Practical fixed length extender to increase the spacing between ports and fittings by 28mm.
- Consistent outer diameter with all DeltaMate fittings for completely seamless integration.
- Robust design allows installation with an 8mm hex key.



DeltaMate Plug / matte nickel

- Simple low profile plug that can be used to block any G1/4" female ports.
- Includes an optional aesthetic cover with DeltaMate logo that can be rotated to any orientation.
- Consistent outer diameter with all DeltaMate fittings for completely seamless integration.
- Easy to install in tight places and SFF builds using an 8mm hex key.

